

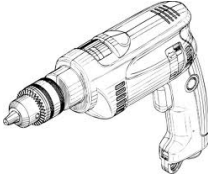



# Oval Courtesy Light

## INSTALLATION INSTRUCTIONS

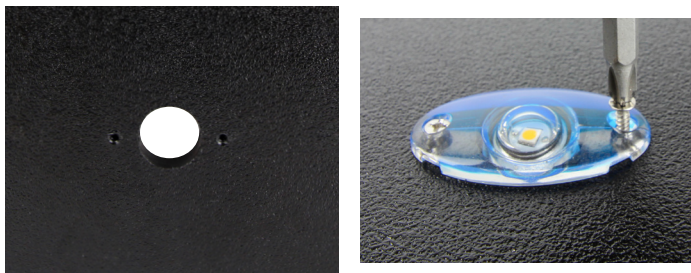
Part#: 69307

PARTS NEEDED:			
			
Courtesy Light	Mounting Screws	Power Drill	Wire Nuts (not provided)

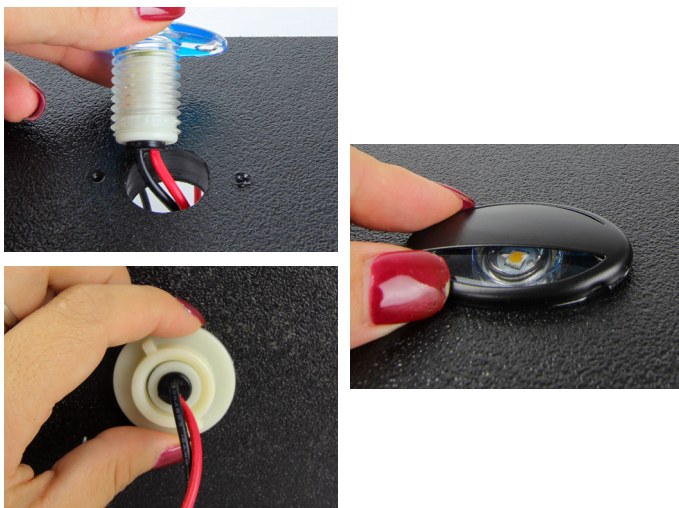
### Safety Instructions

- Disconnect power before installing, adding or changing any component.
- To avoid a hazard to children, account for all parts and destroy all packing materials.
- Light is rated for interior installation only, do not install in wet locations.
- Operating Voltage: 10 - 14V DC

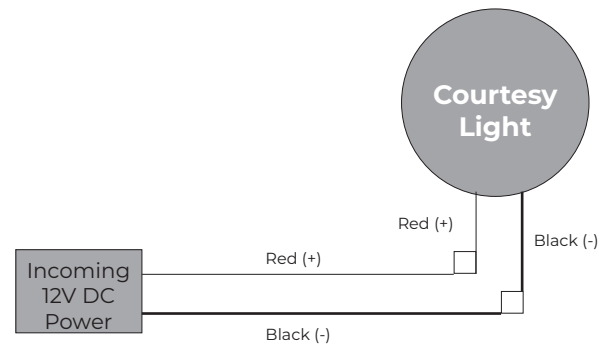
1. Determine where your LED light fixture will be installed. Mark the location of the screw holes. Drill a hole for the wires and screws.



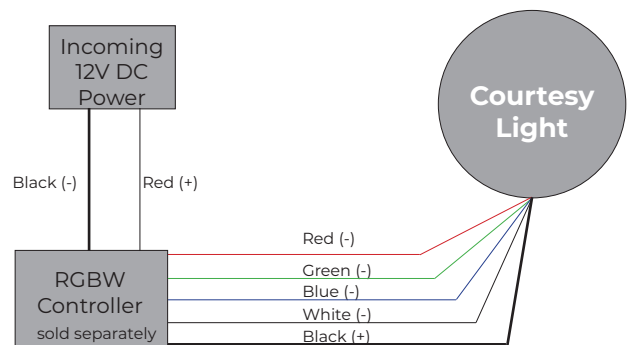
3. Feed the wires through the hole and screw the back nut onto the fixture. Snap bezel onto the light.



2. Use the wiring diagram below to wire the light to the units power. Test the light



Single Color Wiring



RGBW Wiring



3030 Corporate Grove Dr.  
Hudsonville, MI 49426  
Phone: 616.396.1355  
[itc-us.com](http://itc-us.com)

For warranty information please visit [www.itc-us.com/warranty-return-policy](http://www.itc-us.com/warranty-return-policy)  
Rev B · 04/07/20